

TRIPP LIGHT SERIES

Product Name:

Tripp-Mini Sconce

Design Year:

2018

Designer / Manufacturer:

PELLE

Dimensions:

W 7.25in/18.4cm x D 4in/10.1cm x H 6.75in/17.1cm

Weight:

4lbs/1.8kg

Illumination:

Socket type: E12 - Candelabra Base

Bulb: 1 x 40W Frosted G16.5 Bulb (included)

Mounting:

Wall sconce. 5in/12.7cm diameter canopy in matching metal finish

Materials:

Brass or Steel Plate

Metal Finish Options:

Satin Brass, Rust, Steel

Lead Time:

10-12 weeks

Certifications:

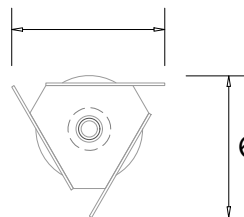
UL/cUL/CE certified

Made in:

New York, USA



7.25in/18cm



6.75in/17cm

4in/10cm

