

BUBBLE CHANDELIER SERIES

Metal Hardware Options

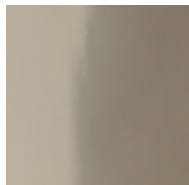


Polished Nickel

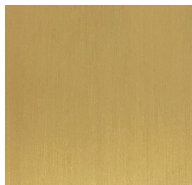


Satin Brass

Standard:

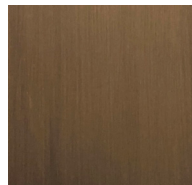


Polished Nickel

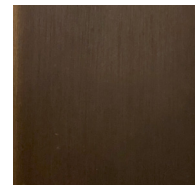


Satin Brass

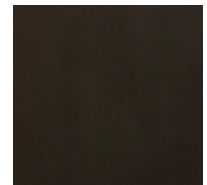
Upgrades:



Antique Brass



Dark Bronze



Black Brass

Decorative Coiling Options

Standard:



Natural Cotton

Upgrades:



White Leather



Natural Leather



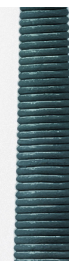
Gray Leather



Henna Leather



Dark Brown Leather



Iris Blue Leather



Black Leather

Note on leather coiling: As a natural product, leather is prone to some variations in color, texture and shade that may differ from the samples shown.

BUBBLE CHANDELIER SERIES

GILDED: Hand-Finished Glass Globes



X-Large Bubble Chandelier with 24k Gold Leafing, Satin Brass, and Black Leather Cord coiling.



Large Bubble Chandelier with Silver Leafing, Polished Nickel, and Natural Leather Cord coiling.

Customize any Bubble Chandelier with gold or silver leafing. Genuine 24k gold or silver leaf is expertly applied by hand onto the surface of each glass globe. Variations in composition and coverage will occur throughout the light fixture. Depending on desired effect, any number of glass globes can be gilded per fixture. Please inquire with sales@pelledesigns.com for current pricing/availability.

OPALESCENT: Hand-Blown Glass Globes



X-Large Bubble Chandelier with Opalescent glass, Polished Nickel, and Black Leather Cord coiling.



In addition to the standard hand-blown clear glass globes, opalescent glass globes are available upon request. Please inquire with sales@pelledesigns.com for current pricing/availability.

BUBBLE CHANDELIER SERIES

PALM: Hand-Painted Glass Globes



X-Tall Bubble Chandelier with Palm Leaf motif, Satin Brass, and Dark Brown Leather Cord coiling.

Palm leaves are expertly painted by hand onto the surface of each glass globe. Please inquire with sales@pelledesigns.com for current pricing/availability.

STROKES: Hand-Painted Glass Globes



Long 80 Bubble Chandelier with Strokes motif, Satin Brass, and Natural Cotton coiling.

Colored brushstrokes are expertly applied by hand onto the surface of each glass globe. Please inquire with sales@pelledesigns.com for current pricing/availability.